



# SMART SUPPLY CHAIN

...Complete Supply Chain Management System



A Complete Product Brochure

# Prologue

---

Softsmart Business Solutions has over the years invested heavily in the design and development of its supply chain management System. We have patiently under-studied the Nigerian business environment with particular focus on how organizations manage the key process of their procure-to-pay cycle. Your procure-to-pay cycle centers on the purchasing of Items to support the enterprise and flows through how these items are purchased, received, tracked, and administered, and how their impact to the company's financial position is recorded.

Smart Supply Chain 5.0 is enterprise-wide software for supply chain management. Designed and developed specifically with the Nigerian business environment in mind, it helps companies small, medium, large, and other organizations Smart supply chain 5.0 record, tracks, and automate all transactions relating to the supply of goods and services to an organization. It is a dedicated feature-rich supply chain management system .From vendors and products management, internal requisitions, procurement, purchasing order fulfillment and inventory tracking, smart supply chain contains all the tools an organization needs to centralize and run their entire supply chain.Easy to install, customize, and use, Smart Supply Chain 5.0 is comprehensive, seamlessly integrates with third party accounting system including smart Financials .

# The Smart Supply Chain Edge



- Multiple Store/Warehouse Capability
- It is 100% customizable by industry and your specific needs
- Has Multi-Level security configuration for store person, SCM Admin and other uses.
- Eliminate paper-flow & redundant data entry to account payables etc.
- Tested
- Completely Streamline your entire Procure-to-pay process
- Unlimited number of employees, unlimited number of companies & offices locations
- Fully integrated Requisition, Procurement, Purchasing, Releasing and Inventory Tracking.

Requisition

Procurement

Purchasing

# Functional Modules

Stores  
Release

Stores  
Receipts

**SMART SUPPLY CHAIN**  
Complete Supply Chain Management System

**SMART SUPPLY CH**  
Supply Chain Management

MIS

Inventory  
Reports



# Smart Supply Chain Features

## FLEXIBILITY & ABSOLUTE CONTROL

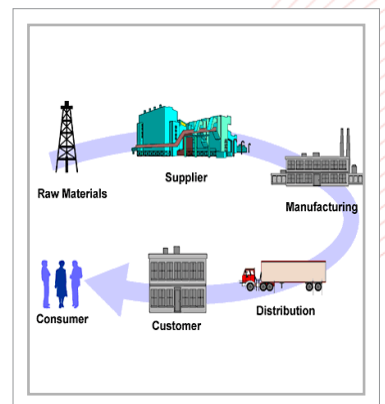
Smart Supply Chain 5.0 is a simple yet powerful tool to control your entire Procure-to-Pay-Process. Smart Supply Chain 5.0 is a pivotal component allowing the requisition and approval, procurement, purchasing, receiving, releasing and inventory Control to be integrated.



## INSTIL EFFICIENCY & EASE INTER-ACTIVITY

Smart Supply Chain 5.0 can provide your organization with a comprehensive, enterprise wide Supply Chain software solution that allows assets to be managed throughout their life cycle process. It achieves this by being able to record and manage asset transactions in a format that is user friendly, customizable and readily promotes information exchange between internal and external stakeholders.

Smart Supply Chain 5.0 helps effectively manage various groups of dispersed assets; even those distributed globally, a process difficult to achieve using traditional, manual asset tracking methods.



# Smart Supply Chain Features

## MAINTAIN COMPREHENSIVE ASSET INFORMATION

Smart Supply Chain 5.0 allows the user to maintain comprehensive details of each asset. The user can effectively monitor data such as repair and maintenance history, schedule the repairs, keep track of re-insurance details, etc. In the Asset Register of Smart Fixed Assets 5.0, all the details of the asset from the time of purchase of the asset to retirement of the asset are recorded. Smart Supply Chain 5.0 allows the user to track the information such as person in charge of the asset, location etc.



## GENERATE REPORTS AUTOMATICALLY

Smart Supply Chain 5.0 has a standard in-built report generator which provides a comprehensive query facility, allowing an individual user to target particular groups for reporting purposes.



## MAINTAIN COMPREHENSIVE PROCURE-TO-PAY INFORMATION

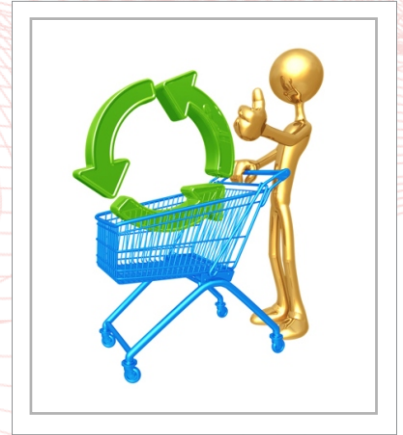
Smart Supply Chain allows you to maintain Comprehensive details on each and every of your Supply Chain Processes. You can effectively monitor data such as items request and fulfillment by Departments/Cost Centers, procurements, Suppliers Quality Standards, Goods supplied by Suppliers, matching of Purchase are with received goods etc



# Smart Supply Chain Features

## MULTIPLE STORES/LOCATION

Multiple Store/Warehouse and multi location storage point. Smart Supply Chain provides you with the capacity to set up multiple warehouses/stores accordingly to request, procure, purchase, release and track inventory for each storage points.



## MULTIPLE INVENTORY COSTING METHOD

Smart Supply Chain allows you to define and implement multiple costing methods for your inventory including average, standard, actual.

## MULTIPLE RE-ORDER POINTS MODEL

Smart Supply chain comes released with multiple inventory pre-defined re-order points model including EOQ(Economic Order Quantity) min/max and static re-order quantity.



## FLEXIBLE APPROVAL WORKFLOW FOR ALL PROCESSES

Smart Supply Chain 5.0 provides the facility to define approval workflow for requisition, procurement, purchasing, releasing etc

# Smart Supply Chain Benefits

- Facility for multiple storage locations with individual facility to issue receive and automatic inventory update
- Facility to track inventory by storage location
- Facility to automatically receive items from previously created purchase order to a pre-defined storage location
- Facility for three standard re-order points model FOQC economic order quantity.
- Average cost, standard cost, actually cost, inventory accounting model/multiple inventory cost accounting models including average cost, standard cost and actual cost inventory
- Three standard re-order points model including EOQ(Economic Order Quantity), min/max and static reorder quantity for predefined re-order points.
- Consistent, flexible item master
- Requester favorite Item Requisition
- Automated matching with general ledger
- Flexible requisition approval workflow
- Logistics Efficiency
- Improved Efficiency/Reduced Cost provides you the capability to buy the right goods at the right place at the right price at the Quantity. Smart Supply Chain empowers you to achieve greater Cost efficiency.





# Smart Companies are getting SMART Have Yours?



**Smart Manager 5.0 (HRMS/Payroll). Smart Financials 5.0 (Financial Accounting System).**  
**Smart CRM 5.0 (Sales/Marketing Automation System). Smart Supply Chain 5.0 (Supply Chain Management System).**  
**Smart Credit Scoring 5.0 (Credit Scoring System). Smart School 5.0 (Complete School Management System)**  
**Smart PRAFS 5.0 (Payment Request and Fulfillment System). Smart Budget 5.0 (Budget Management System).**  
**Smart Medics 5.0 (Practice Management System). Smart Fixed Asset 5.0 (Fixed Asset Management System).**  
**Smart Collateral Manager 5.0 (Collateral Management System). Smart Dealing Portal 5.0 (Treasury Management System)**

No 25, Durban Street, off Adetokunbo Ademola Crescent. Wuse II, F.C.T Abuja. Nigeria.

[www.softsmartsolutions.com](http://www.softsmartsolutions.com), [sales@softsmartsolutions.com](mailto:sales@softsmartsolutions.com)

© copyright 2012. Softsmart. All Rights Reserved

